

Kingslan & Gibilisco Decorative Arts



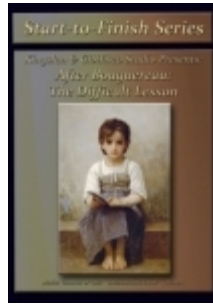
Fall 2013

Inside You'll Find

Classic Out of Print Books on CD
Newest Lesson Plans
Our Signature Brushes
Brush Sets
Genesis Heat Set Oils
Correspondence Courses
Instructional Theory Videos



Artist Desk in Trompe L'oeil



Bouguereau's The Difficult Lesson



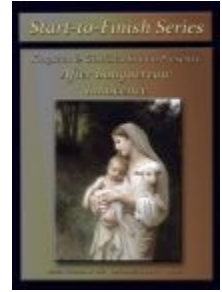
Bouguereau's Rest After the Harvest



Bouguereau's The Nut Gatherer



Bouguereau's The Soup



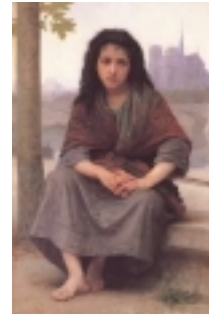
Bouguereau's The Innocence



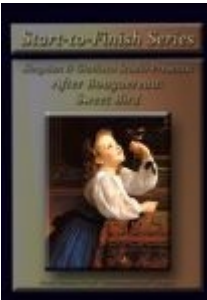
Bouguereau's The Knitter



Bouguereau's The Newborn Lamb



Bouguereau's The Bohemian



Bouguereau's My Sweet Bird



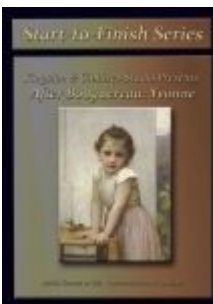
Portrait of Marie



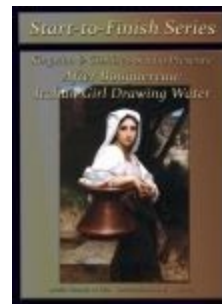
Bouguereau's The Little Sulk



Bouguereau's The Little Sulk II



Bouguereau's Yvonne

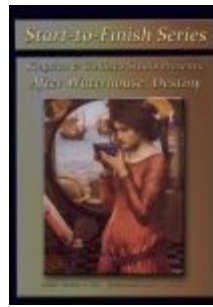


Bouguereau's Italian Girl Drawing Water

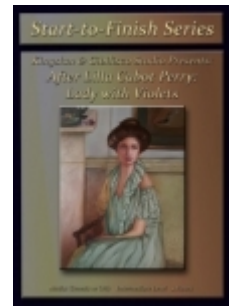
Kingslan & Giblisco Lessons on DVD



Bougereau's Storm



Waterhouse: Destiny



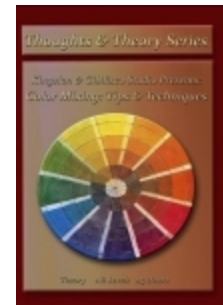
Lady with Violets



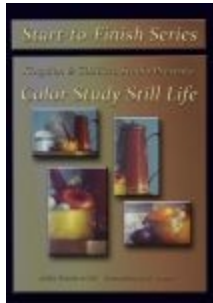
Blending Techniques



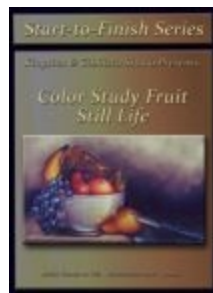
Carol's Desk



Color Mixing and Form Creation



Color Study Still Life



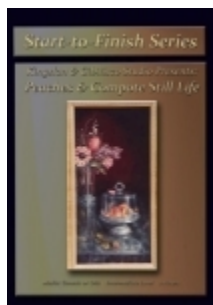
Color Study Fruit



Color Wheel Wreath



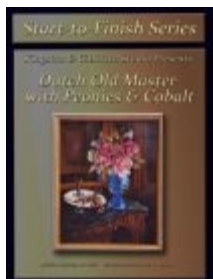
Drawing: Perspective & Form



Dutch Old Master Fruit & Flowers



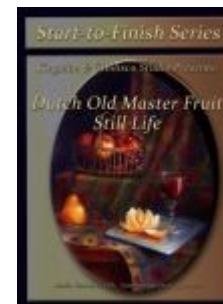
Dutch Old Master: Home to the Heartland



Dutch Old Master Peonies & Cobalt



Dutch Old Master with Bird



Dutch Old Master with Fruit



Dutch Old Master with Flowers



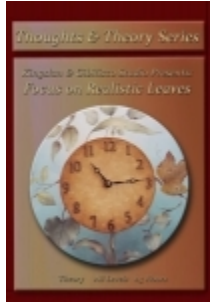
Dutch Old Master with Satin



Dutch Old Master with Cherub



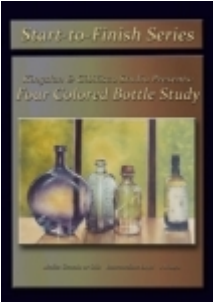
Dutch Old Master with Urn



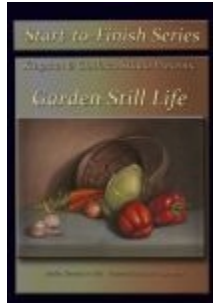
Focus on Leaf Theory



Focus on Realistic Glass



Four Colored Bottle Study



Garden Still Life



Herb Bottle Still Life



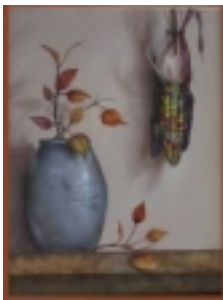
Her First Place



How to Design Your own Work



How to Glaze a Giclee



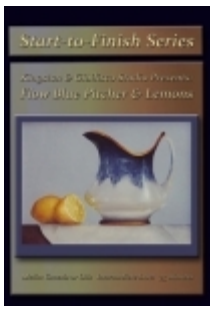
Indian Summer Still Life



Is It Spring Yet?



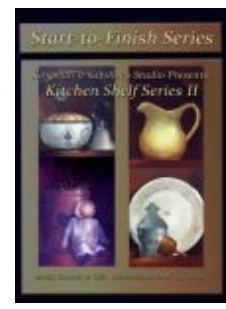
Kitchen Glass Study



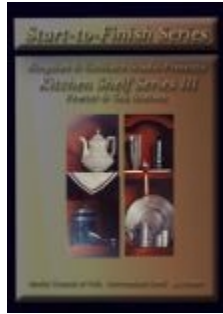
Lemons & Flow Blue China



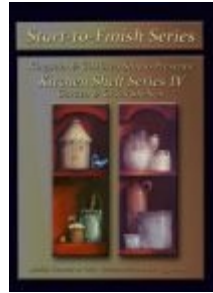
Kitchen Shelf I: Coffee & Canning



Kitchen Shelf II: Amish & Baking



Kitchen Shelf III: Tea & Pewter



Kitchen Shelf IV: Garden & Crock



Life Cycle of a Rose



Michele's Garden



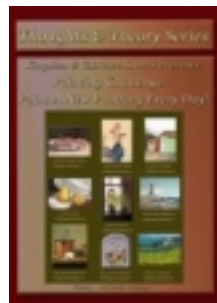
My Favorite Flowers



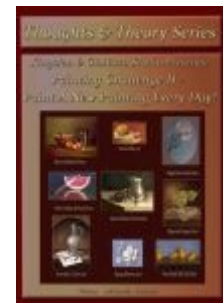
Paint Box Still Life



Italian Still Life



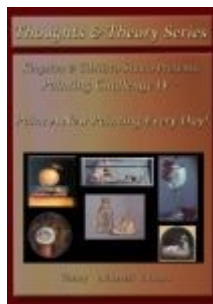
Painting Challenge I



Painting Challenge II



Painting Challenge III



Painting Challenge IV



Painting Challenge V

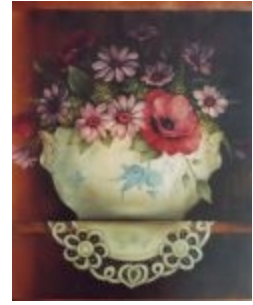
Kingslan & Giblisco Lessons on DVD



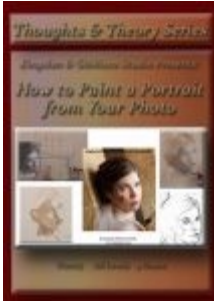
Painting Challenge VII



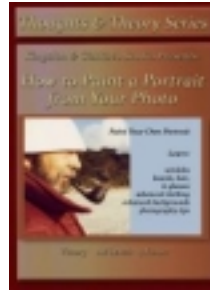
Painting Challenge VIII



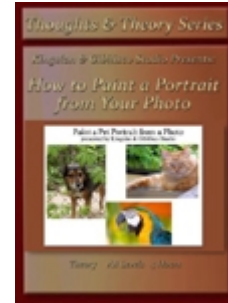
Poppy and Blue China



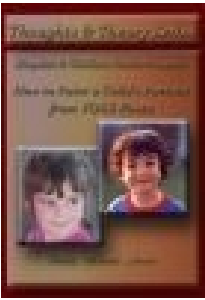
Portrait from Photo Level I



Portrait from Photo Level II



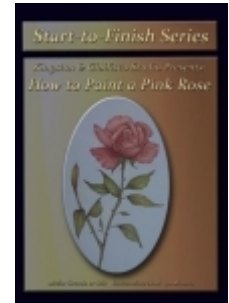
Portrait from Photo - Pets



Portrait from Photo - Children



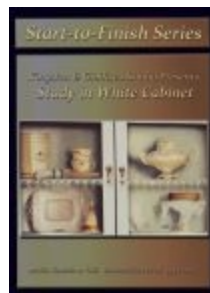
Peeled Orange



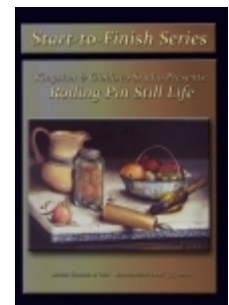
Pink Rose



Spring Bouquet



Study in White Trompe L'oeil



Rolling Pin Still Life on DVD



Tips & Techniques of the Masters



Tips & Techniques of the Masters II



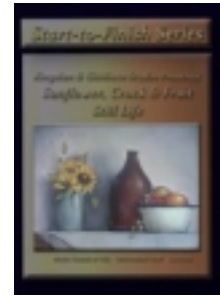
Series for Beginners



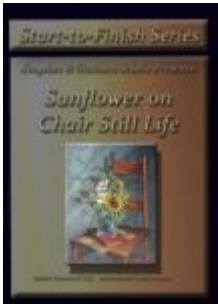
Sideboard Still Life



Strawberry Jar and Terrarium Still Life



Sunflower and Crocks Still Life



Sunflower on Chair Still Life



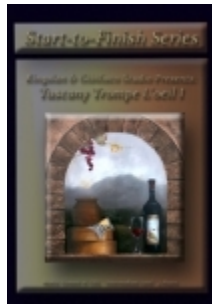
Tea Cup Still Life



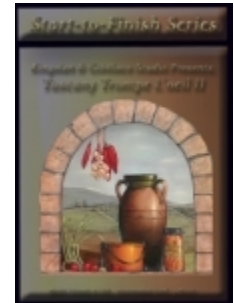
Trunk Full of Flowers



Two Trompe L'oeil



Tuscany Trompe L'oeil I



Tuscany Trompe L'oeil II



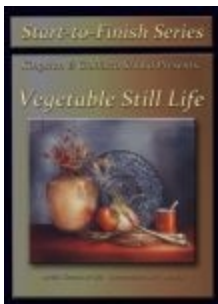
Tuscany Trompe L'oeil III



Tuscany Trompe L'oeil IV



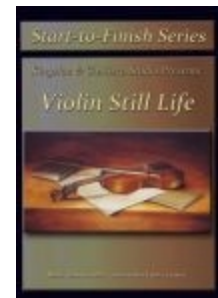
Tuscany Trompe L'oeil V



Vegetable Still Life



Vermeer's Girl with the Pearl Earring



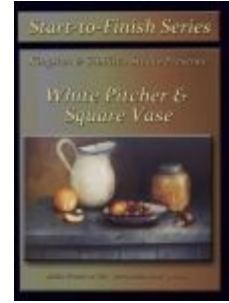
Violin Still Life



White Rose & Calla Lilies



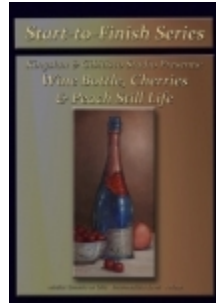
White Rose & Vase Floral



White Pitcher and Square Jar



Wine & Cheese Still Life



Wine Bottle, Cherries & Peach Still Life

All DVDs include full length step-by-step video lesson plus written instructions.

DVD with written instruction on CD (print yourself) \$19.95

DVD with printed instructions \$24.95

Kingslan & Gibilisco Lesson Plans



Italian Pottery and Tangerine
\$8.95



Dutch Old Master after Bosschaert
\$19.95

Painting a Day Project Lesson Plans! The Fruit Series with Mary Kingslan Gibilisco, CDA BFA



\$14.95

Painting a Day Project Part 2 Lesson Plans! The Warm Side with Mary Kingslan Gibilisco, CDA BFA



\$7.95

Painting a Day Project Part 3 Lesson Plans!

The Cooler Side with Mary Kingslan Gibilisco, CDA BFA



\$5.95

Kingslan & Gibilisco Lesson Plans



Sunflowers and Lace \$9.95



Yellow Pitcher and Fruit \$9.95

Kingslan & Gibilisco Lesson Plans



White Vase & Rose Lesson
\$14.95



Garage Doors in Trompe L'oeil Lesson
\$9.95



Wine Glass & Grapes
\$7.95



Out of Print Books
are now E-books or Books on CD!
Download for only \$11.95



Study in Blue Print with Lesson
\$14.95

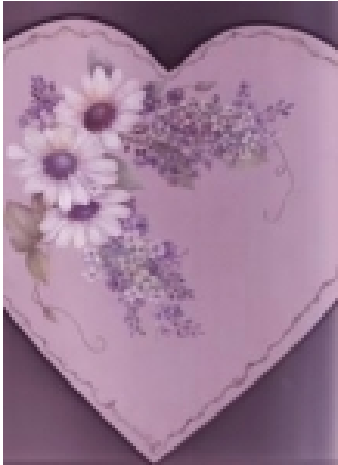


Beach Glass Study \$9.95

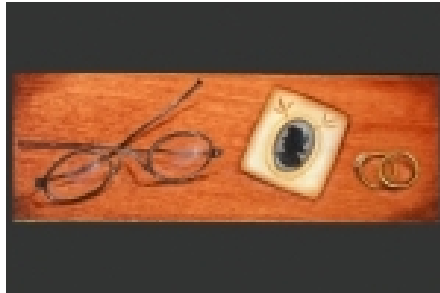


Sunflower & Cobalt or Poppy & Colbalt
\$7.95 each

Kingslan & Gibilisco Lesson Plans



Daisies & French Lilacs
\$8.95



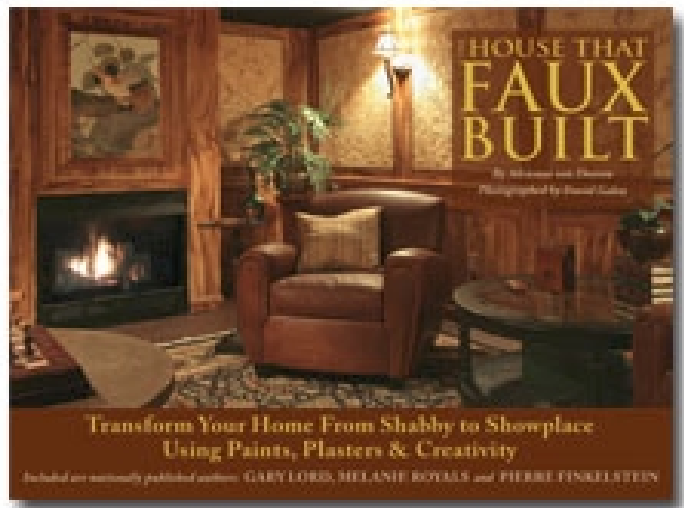
Eye Glasses in Trompe L'oeil
\$8.95



Water Melon & Cobalt
\$8.95



Marshmallow the Cat at the Window
\$9.95



House That Faux Built Hardcover Edition

Proceeds to Habitat for Humanity Katrina Victims. New revised 144 page Coffee Table Book. Show the transformation of an ordinary home through faux finishes, murals and just plain cool stuff.

Price: \$35.00

Kingslan & Gibilisco Lesson Plans



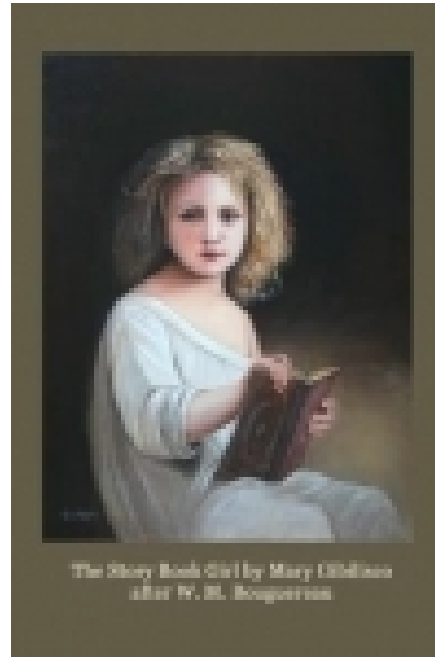
**Tuscany Trompe L'oeil I, II, III & IV:
\$19.95 each or all four only \$56**



Kingslan & Gibilisco Lesson Plans



Soul of the Rose Lesson
A Waterhouse Reproduction
\$19.95
24 x 36

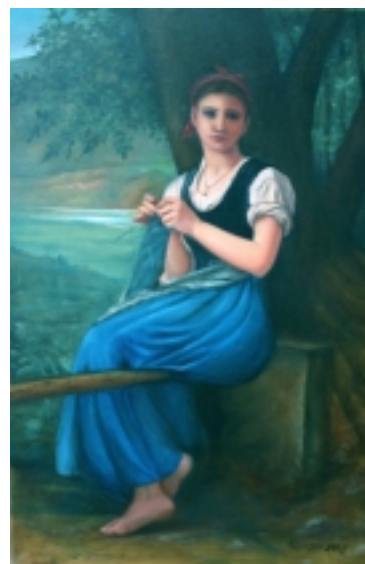


*The Story Book Girl by Mary Lindeman
after Fr. St. Bougeureau*

Story Book Girl
A Bougeureau Reproduction
\$19.95
22 x 30



Meditation Girl Lesson
A Bougeureau Reproduction
\$19.95
24 x 36



Knitting Girl Lesson
A Bougeureau Reproduction
\$19.95
24 x 36

Kingslan & Gibilisco Lesson Plans



Jo's Magnolia \$14.95



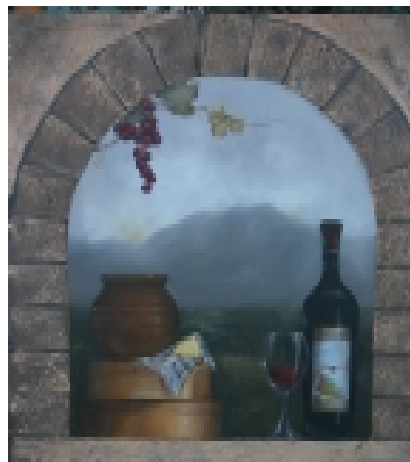
Dutch Old Master with Bird II \$19.95



Dutch Old Master - Home to the Heartland \$19.95



Rose and Drops \$8.95



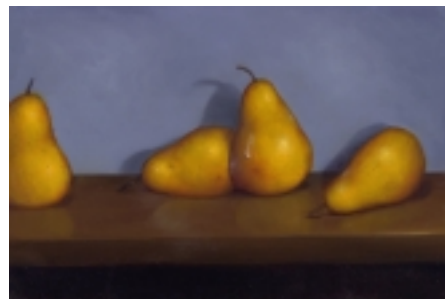
Tuscany Trompe L'oeil I \$19.95



Wine in a Niche \$11.95



Pansy on Tissue Box \$8.95



Pear Still Life \$9.95



Urn and Fruit \$9.95



High and Mid Key Study \$14.95



Orange Still Life \$9.95

Kingslan & Gibilisco Lesson Plans



Iris on Lace
Edged Plate \$8.95



Ink Well Still Life \$9.95



Oriental Lily \$7.95



Brass, Glass & Other Shiny
Things \$12.95



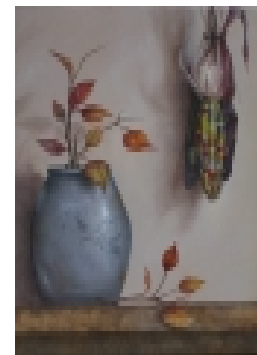
Fruit Sugar and Creamer Set \$7.95
Surface Available: \$27.95



Kay's Teapot \$8.95



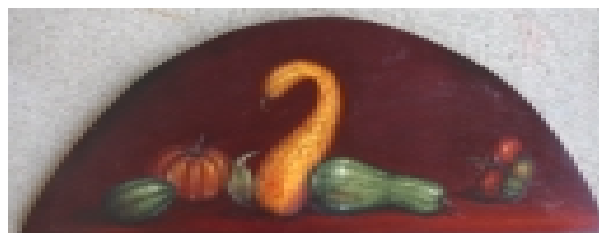
Wine Glass, Pear and Grapes
\$9.95



Harvest Still Life \$9.95



Roses on Table \$11.95



Gourd Door Crown \$8.95

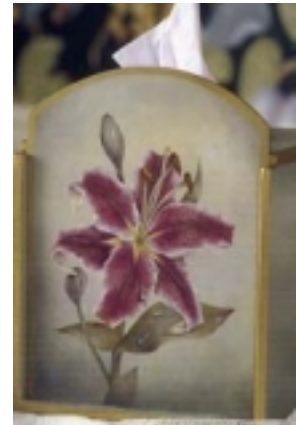
Kingslan & Gibilisco Lesson Plans



Lucious Lemons \$8.95



Magnolia Study \$12.95



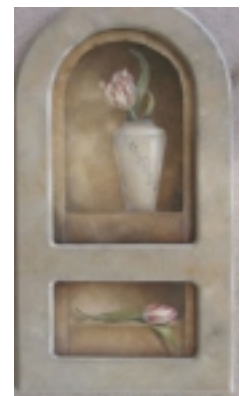
Stargazer Lily \$8.95



Betty's Vase Study \$10.95



Crock Study \$8.95



Tulip in a Niche \$9.95



#190 Tea and Roses \$14.95



Tuscany Time \$8.95



Red Lilies and Lace \$9.95



Tuscany Market \$8.95



Tin Pocket Still Life \$8.95

Kingslan & Gibilisco Lesson Plans



Victorian Pansies \$9.95



Drips, Drops and Puddles \$8.95



Hollyhocks \$14.95



Blue Toille \$8.95



Duck & Crocks \$8.95



Stocking Still Life \$7.95



Hydrangea \$14.95



Monochromatic Leaves \$8.95



Plums and Raspberries \$7.95



Simple Blossom \$8.95



Plum & Leaves \$8.95



Classic Out of Print Books on CD
\$24.95

We Have Unique Premium Brushes!!!

Fabulous Filberts & Mops Designed by Ann and Mary

These revolutionary brushes are created from a newly developed synthetic fiber. The filbert brushes, with an addition of a size 12, are formulated to the same length and exacting standards as the previous line. While they are used for all painting purposes, these filberts are especially effective for painting flowers so as to achieve a soft edge and a subtle blend.

#4999 Mop Brushes

- #0 \$2.25
- #1 \$2.75
- #2 \$3.20
- #4 \$4.50



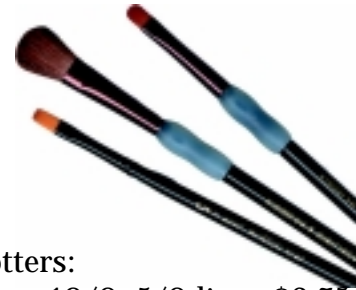
Badger Blender \$21.95
Use for Faux Finishes or
Smooth Wet Varnish

#4150 Flat/Bright Brushes

- #0 \$3.25
- #2 \$4.00
- #4 \$4.60
- #6 \$5.40
- #8 \$6.05
- #10 \$6.85
- #12 \$7.50
- #14 \$8.20
- #16 \$9.00

#4175 Filbert Brushes

- #2 \$4.50
- #4 \$5.00
- #6 \$5.75
- #8 \$6.50
- #10 \$7.85
- #12 \$9.50



Liners and Spotters:

3/0, 20/0 spotter 10/0, 5/0 liner \$3.75



Recommended Palette Knife
\$4.47

Save 30% on Sets!

- Mop Set 0-4 \$10.95
- Filbert Set 2-12 \$24.95
- Flat Set 4-12 \$21.95

- Script/Liner Set \$9.95
3/0, 20/0 spotter, 10/0, 5/0 liner
- Starter Set \$19.95
4, 6 filbert, 0 mop, 3/0 spotter and 4 flat

About Kingslan & Gibilisco Brushes

The Kingslan method and technique both require that small amounts of paint be applied to the surface. A further requirement is that the brush should be held at a 30 degree angle to the surface. Since none of the brushes that were currently available were tied at the length required, Ann contacted several brush manufacturers to determine if it would be possible to create an entirely new brush line.

The synthetic filament is the finest available. It is millimeters thinner than the industry standard. The length of the hairs is shorter to ensure that light pressure only can be applied to the surface. The slim "belly" is specified in order that only sparse amounts of paint can be loaded. These are contributing factors to promote success in painting the Ann Kingslan Academic Method of Painting.

The filberts are especially favored for painting flowers. The gentle contouring of edges of the filberts are an essential tool to achieve the soft look associated with flower painting.

Kingslan & Gibilisco Christmas Lesson Plans



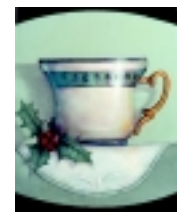
#260 House Water Globe
on Basket Lid \$7.95



#208 Christmas Toys on
Basket Lid \$7.95



#295 Santas of the World
\$8.95



#297 Christmas Tea Cup
\$7.95



#207 Santa Water Globe
\$7.95



#135 Nativity on Tryptych
\$7.95

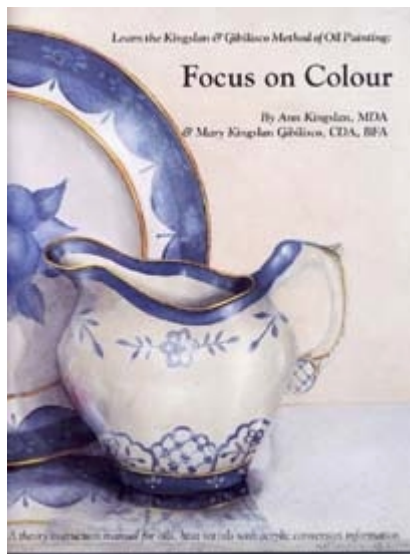


#145 Poinsettia on Heart
\$7.95



#247 Note & Treat for
Santa \$7.95

Printed Books by Kingslan & Gibilisco



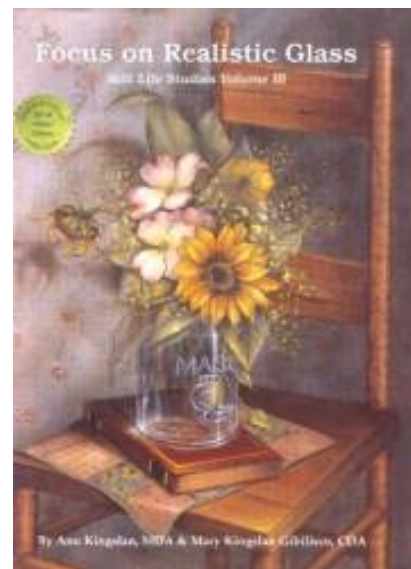
#504 Focus on Colour \$11.95
 contains 48 pages - 12 in colour
 by Ann Kingslan & Mary Gibilisco



#502 Right from the Start
 \$11.95
 contains 40 pages - 12 in colour
 by Ann Kingslan & Mary Gibilisco



#501 Focus on Trompe L'oeil
 \$11.95
 contains 48 pages - 16 in colour
 by Ann Kingslan & Mary Gibilisco



#503 Focus on
 Realistic Glass \$11.95 contains
 36 pages - 12 in colour
 by Ann Kingslan & Mary Gibilisco

Bound Notebook 30 pages with 22 photos
 #306 High & Low Key
 Firescreens
 Both firescreens included for only \$24.95
 by Ann Kingslan & Mary Gibilisco



Kingslan & Gibilisco Correspondence

Which seminars are available through correspondence?

At the present time, the Decorative Art Levels I, II and III and the Dutch Old Master Series are currently available as correspondence courses. Others may be added in the future. The Decorative Art courses may be taken out of order but this is not advised.

NEW! DVD Level One Just Added

There is a step-by-step DVD for Level One. Level Two & Three are in production.

Is there a time limit on when the course must be completed?

There is no time limit.

How is the student evaluated?

The student receives manuals, photos and colour match swatches. The student paints the study pieces to the best of his or her ability. Then pieces are mailed back and are then carefully evaluated by Ann and Mary. A complete written critique is sent to the student. If necessary, the student adjusts the pieces and then sends them back to Ann and Mary. A final evaluation is completed and the pieces are returned to the student.

What are the benefits on these courses?

Upon completion of the courses, you will be a knowledgeable, fully Accredited Ann Kingslan Instructor. This entitles you to additional discounts on wholesale orders, completion certificates, newsletters, and recommendation of your teaching services.

What is the cost of each course?

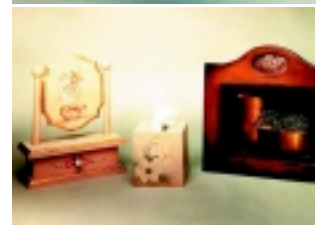
The cost of each Decorative Art course is \$275 and the Dutch Old Master Series is \$200 (US Dollars). The student pays the shipping to Ann and Mary. Ann and Mary pay the shipping back to the student in the United States. Due to the high cost of shipping to Japan the cost of the course is \$375 for the Decorative Art Series.

What is the cost of the wood surfaces?

The wood surfaces are approximately \$60-\$80 (plus shipping) per course and will be delivered directly to the student. The student may order this wood from Kingslan & Gibilisco Seminars or may provide their own wood.

How do I sign up?

Fill out the seminar registration form and mail it, fax or e-mail to Kingslan & Gibilisco Seminars with the proper fees. You may sign up online at www.kingslan.com



Seminar or Correspondence Course Registration Form

Name
Address
City State Zip
Daytime Phone
e-mail address

Seminar or Correspondence Course Title(s)

Each correspondence course registration must be accompanied by the full course fee. Seminars registration must be accompanied by 1/2 of the seminar fee. Make check payable to Kingslan & Gibilisco Seminars. VISA/MC/DISC/AMEX is accepted.

Kingslan & Gibilisco Decorative Arts
920 South 107 Avenue #102
Omaha, NE 68114
(402) 397-0298 (voice and 24 hour fax)

e-mail painting@kingslan.com
www.kingslan.com

Kingslan & Gibilisco Fruit & Flower Lesson Plans



#190 My Favorite Flowers \$14.95



#230 Streaked Apples \$7.95



#179 Victorian Pansies \$7.95



#802 Tulips and Lilacs on Flower Pot Box \$7.95



#2101 Pears and Plums \$9.95



#271 Violets on Octagon Lid \$7.95



#806 White Pitcher & Square Jar \$12.95



#146 Poppies & Cherries \$7.95



#111 Chest Full of Flowers \$7.95



#154 Glazed Grapes \$7.95



#126 Grapes & Crock \$7.95



#163 Morning Glories on Door Harp \$7.95



#169 White Rose & Calla Lilies \$12.95



#150 Silver Reflections \$14.95



#149 Sideboard Still Life \$7.95



#177 Morning Glories \$7.95



#200 Autumn Fruit \$14.95

Kingslan & Gibilisco Fruit & Flower Lesson Plans



#893 Silver Tea Service \$14.95



#894 Stationery Box \$7.95



#167 Melon & Crock \$7.95



#2102 Pears & Grapes on Candlestand \$8.95



#807 Springtime Floral on Wire Basket Lid \$12.95 NEW!



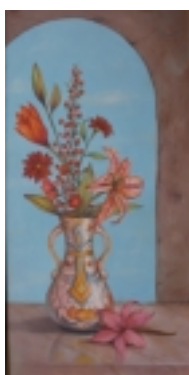
#128 Fruit on Jar lids \$7.95



#119 Crock & Cherries \$7.95



#805 It's the Berries \$7.95



Lily in a Niche \$9.95



#117 Complementary Daylilies \$9.95



#197 Intro to Flowers \$14.95



#182 Rose on hand mirror \$7.95



#308 Colour Wheel Wreath of Flowers \$14.95 NEW!



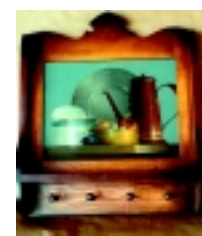
#240 Colour Study Fruit \$14.95



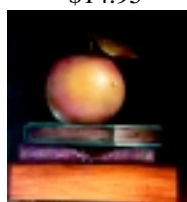
#241 Garden Basket \$14.95



#141 Plums & Pansy \$7.95



#115 Colour Study \$14.95



#897 A Primary Still Life \$7.95



#122 Duck Hunter \$7.95



#123 English Country \$7.95



#144 Pippin Apples \$7.95

Kingslan & Gibilisco Fruit & Flower Lesson Plans



#273 Study in Red \$14.95

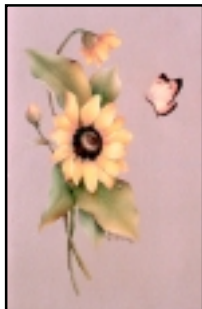


#186 Apples on Welcome Sign \$7.95



#299 Cloth, Fruit & Wine \$14.95

How about joining us for a seminar?



#193 Sunflowers & Butterfly on Scrapbook \$7.95



#184 Flour & Flower \$7.95



#899 Rolling Pin Still Life \$14.95



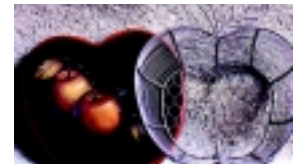
#236 Water: Melon & Drops \$8.95



#2103 Tomato Harvest 10.95 NEW



#203 Red Granite & Apples \$8.95



#221 Streaked Apples on Basket Lid \$7.95 NEW



#181 Vegetable Still Life \$10.95



#151 Setup on a Paintbox \$10.95



#219 Lemon Slice \$7.95



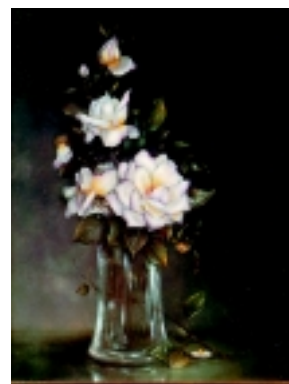
#147 Porcelain Painting Techniques \$7.95



#2104 \$12.95 Rose on a Palette NEW!



#227 Rose & Glass Vase \$7.95



#131 Life Cycle of a Rose \$7.95



#209 Pansy and Vase \$8.95

Kingslan & Gibilisco Dutch Old Master Style Lessons



#301 Dutch Old Master
with Mirror \$19.95



#302 Dutch Old Master with
Cherub and Nest \$19.95



#303 Dutch Old Master
with Fruit \$19.95



#307 Dutch Old Master
with Bird \$19.95



#304 Dutch Old Master
Floral
\$19.95



#378 Dutch Old Master
Fruit & Flowers
\$19.95



#305 Dutch Old Master
with Flowers & Satin
\$19.95



191 Urn & Fruit
\$14.95

Kingslan & Gibilisco Technique Lesson Plans



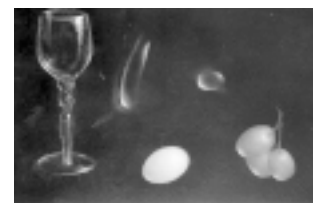
#148 Shadow Theory \$7.95



#107 Blending Theory
\$7.95



#265 Ellipse Theory &
Template \$7.95



#275 Theory of Light: Glass,
Drops, Eggs & Grapes
\$7.95

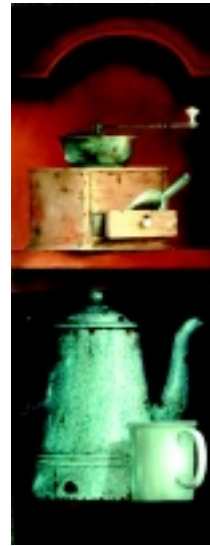
Kitchen Cabinet Shelf Series (Buy all 9 for only \$49.95)



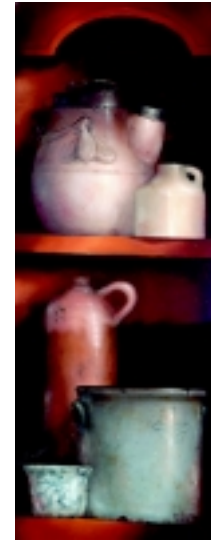
#102 Amish Christmas Shelf
\$7.95



#110 Canning Shelf
\$7.95



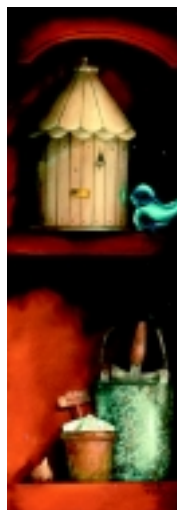
#114 Coffee Shelf
\$7.95



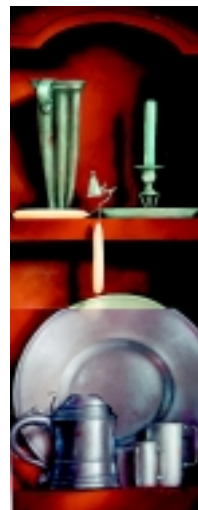
#120 Crock Shelf
\$7.95



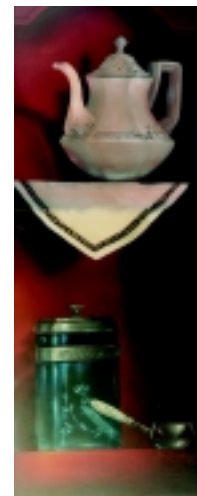
#106 Baking Shelf \$7.95



#172 Garden Shelf \$7.95



#143 Pewter Shelf \$7.95

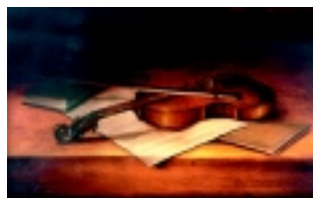


#159 Tea Shelf \$7.95

Miscellaneous Still Life Designs



#807 Is It Spring Yet?
\$8.95 NEW!



#235 Violin Still Life \$7.95



#298 Vase on a Tea Dispenser \$7.95



#806 Book Shelf \$7.95

Kingslan & Gibilisco Glass and More Studies



#213 Four Colored Bottle Study
\$7.95



#218 Herb Bottle \$7.95



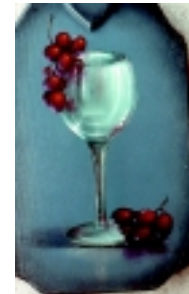
#270 Wine & Cheese Still Life
\$14.95



#129 Kitchen Glass Study \$14.95



#201 Baby Shoe & Bottle
\$7.95



#217 Grapes &
Wine Glass
\$7.95



#205 Cantaloupe & Glass
\$7.95



202 Bathroom Glass
Cabinet \$14.95



#133 Bread Box Still Life
\$7.95



#210 Country Still Life
\$14.95



#216 Vase & Fruit
\$7.95



#243 Perfume Bottle Cabinet \$14.95



China Collection Corner Cabinet
#187 Top and Bottom Door \$24.95
#113 Bottom Door \$19.95
#112 Top Door \$9.95

Kingslan & Gibilisco Trompe L'oeil (fool-the-eye) Studies



#105 Artist's Desk
\$7.95



#152 Study in White
\$19.95



#253 Cross Stitch
Still Life \$7.95



#250 Music & Watch
\$7.95



#139 Painting
Time \$7.95



#171 Writing Treasures \$14.95



#251 Teacup Still Life
\$7.95



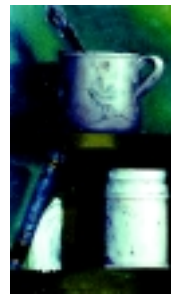
272 Pink & Blue Teacup
Still Life \$7.95



#244 Trompe
L'oeil Cabinet
\$9.95



#246 Sunflower Cabinet
\$7.95



#220 My Favorite
Cup \$7.95



#206 Childhood Memories
\$7.95



#238 After the Opera,
Top \$9.95



#101 After the Opera
Cabinet, Door \$9.95
#300 After the Opera,
Door and Top \$15.95



#898 Sewing Gadgets
\$8.95



#280 Cup and Saucer
\$8.95



#173 Cherries on Table \$10.95



#196 Candlebox Still Life
\$7.95



#199 After the Ball \$7.95

Gadgets Every Artist Needs



#ROVW Royal Oval 1" Wash Varnish Brush \$11.55 (excellent for varnish as it does not leave chisel marks)



#704-1 4" Sponge Roller & Handle \$4.99
 #704-2 Handle only 2.99
 #704-3 Sponge only 2.99
 We use this to create the proper texture on background applications



Heat Gun Holder \$12.95 (gun not included)



Graphite Transfer Paper Gray or White \$2.99



Use this graph ruler to assure your still life is straight!

C-Thru Graph Ruler B85 is a lightweight, clear ruler which offers handy grid patterns in inches.

There is also a "0 centering scale," so you can measure equally left and right from a centered starting point. Beveled edge graph ruler

6" x 2" \$1.85
 18" x 2" \$5.95



Wipe Out Tool \$3.50



Americana Stuccos are unique, heavy-bodied textural paints that can be used in a variety of free form ways to add texture to furniture pieces and home décor accessories.

We use this to create the stucco bricks surrounding our trompe l'oeil Tuscany still lifes. **\$5.50**



#1SS Soapstone pencil and holder \$4.99
 # 2SS Soapstone pencil refill only \$.99 (use instead of chalk)



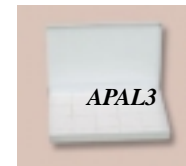
#702 Safe-T Compass \$1.99
 Makes perfect circles from 1/4" to 10" without leaving a hole in your work



#905 3" Gentle Brush Scrubber Disk \$.99

Value Scale Notes	
Value	
High Light	
Light	
Low Light	
Medium	
High Dark	
Dark	
Low Dark	
Accents & Tints	

This 25 sheet pad will help you document every painting that you create - Ann and Mary use it for each painting. Keep track of mixes and swatches. 8.5" x 11" \$5.95



Metal Palette with Glass Insert
 APAL3 5x8 palette \$8.95



Final Coat Varnish Specify Gloss or Matte .25 Liter \$21.95
 Final Coat Applicator Pad \$2.95

More Gadgets Every Artist Needs



Six Genesis Paint and Mixing Jars

Choose between 1 oz \$6.95
or 1/2 oz \$5.95



Battery Operated Eraser

Battery Operated Eraser operates with a simple push of a button. This economical handheld eraser includes 10 extra graphite eraser refills. You will never erase with just finger power ever again! Requires two AAA batteries (sold separately). \$14.95



Vicking Spray

Use this spray over the Genesis Heat Set Oils to seal off your work or as a varnish. Can be painted on top of and re-heat set!

Viking Spray varnish provides a permanent finish that is moisture resistant. They dry quickly with a clear finish that is non-yellow-

ing. Viking is nicely compatible with Genesis Heat Set Oils. Oil Rouging and Viking Spray varnishes are good friends. Viking works so well drying quick to isolate layers of oil paint so as to allow the artist to complete a project in less time. Gloss or Matte Finish \$7.95



Wooden Palette with Glass Insert

This palette comes with a paper palette guide to put under the 11 x 14 piece of glass. Two slats that are attached to the lid keep glass from shifting during transportation. A piece of aluminum flasing on the inside of the lid keeps paint from accidentally staining the wood. Lightweight! \$32.95



Large Easel \$21.95 Small Easel \$14.95

Use this portable and light weight wooden easel to hold your painting or drawing. The easel can be positioned at 3 different heights. Small easel includes a piece of masonite.



Steel Wool

Extra fine grade (#0000) steel wool can be used to smooth out almost any surface, from wood to metal. It even works well for cleaning glass without water or cleaners, and leaves a very polished look. It's flexible and conforms to any shape. \$1.29



Mona Lisa Paint Thinner

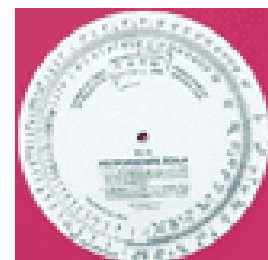
Use this paint thinner to act as an extender for line work with Genesis or traditional oils. Works better than Genesis Thinning Medium! The Thinner of choice for Reborn Dolls & Genesis.

8 ounces \$5.00 16 ounces \$7.70



Rotating Easel

Non-slip surface holds your piece at different levels; allows you to rotate it; and folds flat. Makes painting comfortable for your hands and wrists. Holds up to a 16" x 20" board. \$32.00



Proportion Wheel

Use this wheel to size your drawings. The tool will help you exactly how much to enlarge or reduce your drawing. Eliminate guess work! \$3.95

Even More Gadgets Every Artist Needs



JW Etc Right Step Varnish

Use this durable waterbased varnish over your oils or Genesis. Choose between 8 ounces of Satin, Matte or Gloss.

Build with gloss as it is the hardest and clearest varnish. Finish with a satin or matte to cut the shine. Satin and matte both contain talc so do not use these to build up the varnish as it will appear cloudy especially on a dark background.

8 ounces \$7.50



Ellipse Template

We have added lines to show the center axis of the ellipse plus it is virtually see-through now. This template is used to create perfect elliptical shapes (circles in perspective). Ann and Mary use this ellipse depth in all of their below-eye-level paintings. Add a Drawing DVD if you need help learning how to draw perfect ellipses and perspective. \$6.95



Super Film

Super Film is an ultra fine grain sanding film which gives your project a smooth, glasslike surface. \$2.99



This air dry sealer can be put over traditional oils to seal off so that you can over paint with Genesis. The painting surface must be able to withstand the heat. Therefore no pine or glued surfaces.

2 ounce - \$2.95
8 ounce - \$16.95



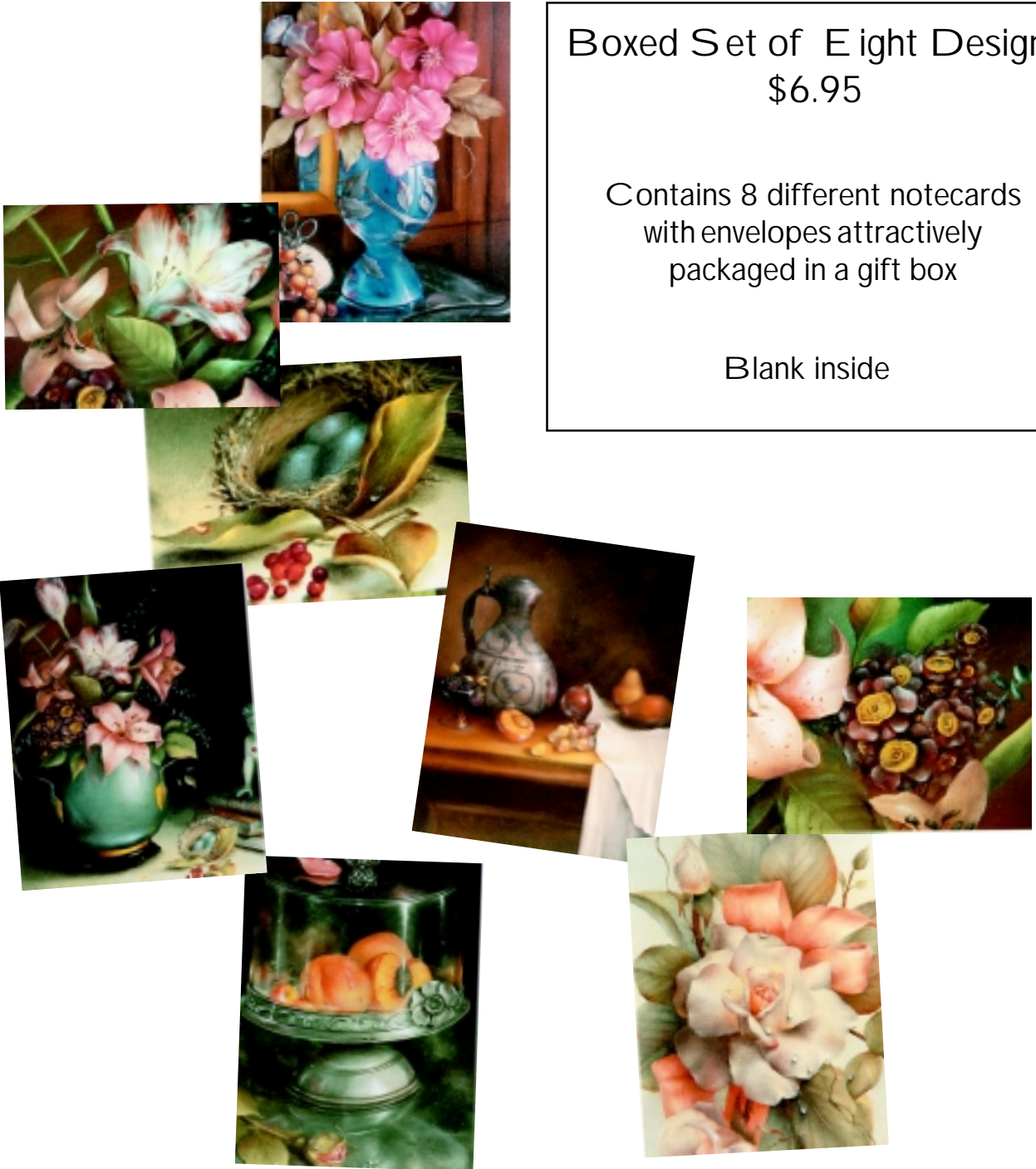
Aluminum Case Only with shoulder strap

Will hold 70 jars of Genesis Paint, Gun, Brushes, Palettes, lessons and more.

Heavy duty case will withstand virtually any abuse - even from a painter!

\$100

Note Cards Featuring the Work of Ann Kingslan & Mary Gibilisco

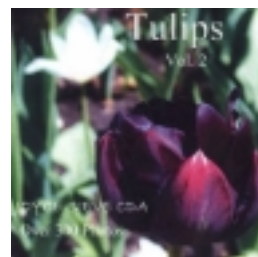


Boxed Set of Eight Designs
\$6.95

Contains 8 different notecards
with envelopes attractively
packaged in a gift box

Blank inside

Joyce Sieve Photo Reference on CD



Each CD has photos of the subject matter in many stages, angles and directions. Use these photos to create your own design work. Over 300 photos of in each CD.

\$17.50 each or 5 CDs for \$45



Kingslan & Gibilisco Genesis™ Heat Set Oil Kit

Our kit is different than any other kit on the market - as it is designed specifically for the Decorative Artist. It contains 9 paints (White, Genesis Yellow, Quinacra Crimson, Ultramarine Blue, Pthalo Blue, Genesis Red, Burnt Umber, Raw Sienna, Mars Black) 2 mediums (Thinning & Glazing), heat gun, instructional video, our conversion chart and our usage tips. It contains all of the paint needed to paint the Kingslan Method!

Kit: \$275.00

What is this new type of paint and how is it different from traditional oils? With the AP nontoxic Genesis paint there is no set up or clean up: the paint on the palette will never dry. As artist and colourist Steven Golden states, “Set up is turning on your work light. Clean up is turning off your work light.” There is no rush to finish a piece: your mixes stay workable as long as you need. Imagine mixing your paint and it is there waiting for you tomorrow, the next day, month or year. There is no waiting for the piece to dry: the paint will dry on demand within minutes when you are ready for it to be dry. Remember that the paint is also nontoxic and non-allergenic so your work area stays odor free. However, this unique paint is not intermixable with other oil paints.

How is all of this possible? It is possible through a revolutionary patented formula that took years to perfect. One of the characteristics of Genesis Artist Colours™ is that they are thixotropic, which means that although in the jar they are thick -- very much like stiff paste -- it only takes a bit of stirring or mixing on your palette with a palette knife for the paint to become extremely soft, buttery and malleable. After working with the paint it reverts back to its original thick viscosity. Unlike oil, acrylic and watercolour paints that “air dry”, Genesis paints remain fluid until the artist decides to dry it. It is the unique formulation of the Genesis carrying medium that makes this possible. It is nondrying when exposed to air, yet quick-drying upon demand because of the heat-fixing agent. It truly is an artist’s dream come true.

Can the “look” of oil be achieved? Together we have been painting exclusively in oils for a combined 50 years. The luminosity of oil delivered our desired effect. Oil paint glows from within due to the trapped layers of oil. We thought that we had finally found a drawback. Again we were wrong. The pigments used in all colours have been selected for lightfastness, brilliance and covering qualities. The paint is odorless and nontoxic. The paint will never fade but continue to create that elusive “glow” that have endeared oils to artists throughout the centuries. When the paint is dry, it looks exactly the same as when it was wet. Therefore, it is not necessary to compensate for how it might look after it is dried or has been varnished.

Are the paints expensive? Genesis paints are less expensive than traditional oils especially when you factor in the lack of waste. The paint does not dry on the palette so every bit of paint can be used. Genesis paint is packaged in wide mouthed jars. Therefore it is possible to put the paint back in the jar. We use just nine basic colours (Titanium White, Genesis Yellow, Ultramarine Blue, Genesis Red, Quinacridone Crimson, Mars Black, Burnt Umber, Raw Sienna, and Pthalo Blue) plus Thinning Medium and Glazing Gel. The glazing gel takes any paint and makes it transparent. The paint does not start to “break down” or become grainy as do some oils when they are extended. Order our exclusive kit today!

The Genesis Artist Colors™ Systems

Genesis Artist Colors™ systems offer artists, from beginner to advanced, the opportunity to experience Genesis Artist Colors™ at the appropriate level. Whether the Try Out, Basic Palette, Introductory, Professional, Master, or Travel, discover the revolutionary painting system that puts you, the artist, in control.



Genesis Try-Out Set

Contains six sample tubes (1/3 oz. each) of Genesis Red, Titanium White, Diarylide Yellow, Burnt Umber, Phthalo Green, Ultramarine Blue, and instruction booklet. **86110X Genesis Sample Set \$14.95**



Introductory System

An economical way to experience Genesis Artist Colors™. This set includes one ounce jars of the following: Diarylide Yellow, Ultramarine Blue, Genesis Red, Carbon Black 01; Titanium White, Glazing Medium; informational video; instruction manual; Genesis Drying Gun.

86090T Introductory System \$169

Basic Palette System

An enhanced version of the Introductory System offering more colors and mediums. The Basic Palette System is available in two versions, one with a drying gun (shown) and one without drying gun. **86091V Basic Palette System: 10 one-ounce jars of the**



following colors: Diarylide Yellow, Phthalo Green 05, Ultramarine Blue, Dioxazine Purple 06, Genesis Red, Pyrrole Orange 06, Burnt Umber, Raw Umber, Carbon Black, Titanium White; one-ounce jars of Glazing Medium and Thinning Medium; informational video, instruction manual, Genesis Drying Gun. \$125

86115E Basic Palette System without Drying Gun (not shown):

9 one-ounce jars of the following colors: Titanium White, Bismuth Yellow 07, Yellow Ochre, Phthalo Blue 04, Dioxazine Purple 01, Pyrrole Red 03, Burnt Sienna, Gray 06, Gray 02; one-ounce jars of Glazing Medium, Thinning Medium, and Thick Medium; informational video, instruction manual \$79.95

Master Studio System

Designed as a complete portable studio, the hand-crafted woodcarrying case includes a tray that securely holds the jars of paint, a hinged lid to protect paint from dust, and a 21 1/2" x 6 1/2" glass mixing tray/palette. The set also includes: 45 Genesis Artist Colors™ (1 oz. each); Titanium White (two one-ounce jars); Glazing Medium (1 oz.), Thinning Medium (1 oz.); Thick Medium (1 oz.); informational video; instruction manual; jar lid labels; Genesis Drying Gun OR Genesis Drying Box.

86092W Master Studio System with drying gun \$549.00

86093X Master Studio System with drying box \$998.00



Travel Master System

This light-weight, compact briefcase is impact-resistant, and easy-to-go, allowing artists to be ready to paint instantly! The savvy looking new aluminum clad case organizes the most useful colors in the Genesis Artist Colors™ spectrum. The Travel Master is available with Genesis Artist Colors™, mediums and a drying gun or empty. It also has a removable shoulder strap and a lock with key so the case can be checked as luggage.

A companion to the handcrafted wood Master Studio System, the Travel Master System offers artists a more portable choice for their painting convenience. The glass mixing palette in the Master Studio box is replaced with a reusable and disposable non-porous palette keeper. The wooden 50-jar color palette grid with handles is replaced with two stackable, reusable and disposable 35-jar paint organizer trays—allowing space for 40% more paint in 30% less space!

86131C Travel Master System with product: aluminum case with strap, the full palette of Genesis Artist Colors™ and mediums from the Master Studio System, drying gun, palette keeper, two 35-jar paint organizer trays, informational video, jar lid labels, and instruction manual . \$449.00



Make your own prints with your ink jet printer with the special canvas paper and Giclee Medium.

Giclee Medium \$18.95

Ink Jet Canvas \$15.95

Professional Studio System

For the serious artist, this is the ultimate Genesis Artist Colors™ set. An enhanced version of the Master Studio System, this set offers almost twice the number of colors and has a 30⁷/₈" x 6⁷/₈" glass mixing tray/palette. The set also includes: 77 Genesis Artist Colors™ (1 oz. each); Titanium White (three one-ounce jars); Glazing Medium (two one-ounce jars); Thinning Medium (two one-ounce jars); Thick Medium (two one-ounce jars); informational video, instruction manual; jar lid labels; Genesis Drying Gun OR Genesis Drying Box.

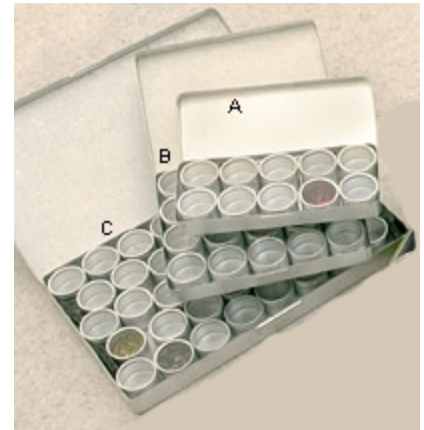


86094A Professional Studio System with drying gun
\$998.00

86095B Professional Studio System with drying box
\$1,449.00

**Genesis Set of Gray 02-08 or
 Genesis Set of Flesh Tones 02-08**

G-Gray Set \$108
 G-Flesh Set \$108



Aluminum Storage Tins

Use these tins to hold your mixed paints or paint to take to class. Each tin is 1 1/4 inch or 33 mm and is 1 inch deep. Comes with clear lids and a case.

10 holders \$9.95
 20 holders \$15.95
 40 holders \$22.95

Genesis Mediums, Cleaners, Varnishes

1 oz. Thick Medium	\$14.95
4 oz. Thick Medium	\$19.95
1 oz. Thinning Medium	\$14.95
4 oz. Thinning Medium	\$19.95
1 oz. Glazing Gel	\$14.95
4 oz. Glazing Gel	\$19.95
4 oz. Giclee Medium	\$19.95



#GUN Genesis Heat Set Gun

Use this heat gun to dry your Genesis paint. It is lightweight and was created just for this purpose \$83.95

The Full Line of GENESIS Artist Colors™

All Colors are Odorless and NON-Toxic

							
Yellow White 08 86003C (OP)	Bismuth Yellow 07 86004D (OP)	Permanent Green 06 86007G (OP)	Permanent Green 05 86008H (OP)	Permanent Green 04 86009J (OP)	Viridian 03 86010K (OP)	Viridian/Blue 02 86011M (TP)	Viridian/Blue 01 86012N (TP)
							
Phthalo Green 08 86013P (OP)	Phthalo Green 07 86014R (OP)	Phthalo Green 06 86015S (OP)	Phthalo Green 05 85016T (OP)	Phthalo Green 04 86017V (OP)	Phthalo Green 03 86018W (OP)	Phthalo Green 02 86019X (OP)	Phthalo Green 01 86020A (TP)
							
Phthalo Blue 08 86021B (OP)	Phthalo Blue 07 86022C (OP)	Phthalo Blue 06 86023D (OP)	Phthalo Blue 05 86024E (OP)	Phthalo Blue 04 86025F (OP)	Phthalo Blue 03 86026G (OP)	Phthalo Blue 02 86027H (OP)	Phthalo Blue 01 86028J (TP)
							
Dioxazine Purple 08 86030L (OP)	Dioxazine Purple 07 86031M (OP)	Dioxazine Purple 06 86032N (OP)	Dioxazine Purple 05 86033P (OP)	Dioxazine Purple 04 86034R (OP)	Dioxazine Purple 03 86035S (OP)	Dioxazine Purple 02 86036T (OP)	Dioxazine Purple 01 86037V (TP)
							
Pyrole Red 08 86038W (OP)	Pyrole Red 07 86039X (OP)	Pyrole Red 06 86040B (OP)	Pyrole Red 05 86041C (OP)	Pyrole Red 04 86042D (OP)	Pyrole Red 03 86043E (OP)	Pyrole Red 02 86044F (TL)	Quinacridone Crimson 01 86045G (TP)
							
Quinacridone Magenta 08 86046H (OP)	Quinacridone Magenta 07 86047J (OP)	Quinacridone Magenta 06 86048K (OP)	Quinacridone Magenta 05 86049L (OP)	Quinacridone Magenta 04 86050M (OP)	Quinacridone Magenta 03 86051N (OP)	Quinacridone Magenta 02 86052P (OP)	Quinacridone Magenta 01 86053R (TP)
							
Pyrole Orange Yellow 08 86056V (OP)	Pyrole Orange Yellow 07 86057W (OP)	Pyrole Orange 06 86058X (OP)	Pyrole Orange 05 86059A (OP)	Pyrole Orange 04 86060B (TP)	Red Oxide 86054S (OP)	Burnt Sienna 86071N (TL)	Raw Sienna 86128A (OP)
							
Flesh 08 86061C (OP)	Flesh 07 86062D (OP)	Flesh 06 86063E (OP)	Flesh 05 86064F (OP)	Flesh 04 86065G (OP)	Flesh 03 86066H (OP)	Flesh 02 86067J (OP)	Burnt Umber 86068K (OP)
							
Gray 08 86072P (OP)	Gray 07 86073R (OP)	Gray 06 86074S (OP)	Gray 05 86075T (OP)	Gray 04 86076V (OP)	Gray 03 86077W (OP)	Gray 02 86078X (OP)	Carbon Black 01 86079D (OP)
							
Titanium White (OP) 86001A (1 oz.) 86002B (4 oz.)	Yellow Ochre 86005E (TL)	Diarylide Yellow 86006F (OP)	Ultramarine Blue 86029K (TP)	Genesis Red 86055T (TL)	Genesis Yellow 86127W (OP)	Raw Umber 86070M (OP)	Burnt Umber Light 86069L (OP)
							
Mars Black 86126V (OP)	Metallic Gold 86124R (OP)	Metallic Silver 86125T (OP)					

NOTE: Every effort has been made to insure the representation of the Genesis Artist Colors™ shown on this chart are accurate.

GENESIS™
ARTIST COLORS
HEAT-SET ARTIST OILS

OP=Opaque; TP=Transparent; TL=Translucent

Genesis Price List

- Pyrrole Orange Yellow 07 \$13.95
- Phthalo Blue 07 \$12.95
- Phthalo Blue 05 \$12.95
- Phthalo Blue 03 \$12.95
- Phthalo Blue 01 - \$14.95
- Dioxazine Purple 03 \$15.95
- Dioxazine Purple 05 \$14.95
- Dioxazine Purple 07 \$14.95
- Dioxazine Purple 08 \$14.95
- Pyrrole Red 02 \$19.95
- Pyrrole Red 04 \$17.95
- Pyrrole Red 06 \$13.95
- Pyrrole Red 08 \$13.95
- Viridian 03 \$17.95
- Viridian Blue 02 \$16.95
- Mars Black \$12.95
- Burnt Sienna \$15.95
- Burnt Umber Light \$14.95
- Diarylide Yellow \$17.95
- Flesh 03 \$14.95
- Flesh 05 \$14.95
- Flesh 07 \$13.95
- Yellow Ochre \$12.95
- Permanent Green 03 \$17.95
- Permanent Green 05 \$17.95
- Phthalo Green 01 \$17.95
- Phthalo Green 03 \$14.95
- Phthalo Green 05 \$12.95
- Phthalo Green 07 \$7.95
- Genesis Orange \$17.95
- Gray 03 \$16.95
- Gray 05 \$16.95
- Gray 07 \$16.95
- Metallic Silver \$14.95
- Flake White \$14.95
- Genesis Yellow \$17.95
- Pyrrole Orange 05 \$14.95
- Pyrrole Orange Yellow 08 \$13.95
- Quinacridone Magenta 01 \$19.95
- Quinacridone Magenta 03 \$14.95
- Quinacridone Magenta 05 \$12.95
- Quinacridone Magenta 07 \$12.95
- Raw Umber \$13.95
- Red Oxide \$14.95
- Titanium White - 4 ozs - \$22.95
- Phthalo Blue 08 \$12.95
- Phthalo Blue 06 \$12.95
- Phthalo Blue 04 \$12.95
- Phthalo Blue 02 \$14.95
- Dioxazine Purple 01 \$17.95
- Dioxazine Purple 04 \$15.95
- Dioxazine Purple 06 \$14.95
- Dioxazine Purple 02 \$16.95
- Titanium White - 1 oz - \$12.95
- Pyrrole Red 03 \$19.95
- Pyrrole Red 05 \$14.95
- Pyrrole Red 07 \$13.95
- Ultramarine Blue \$13.95
- Viridian Blue 01 \$16.95
- Bismuth Yellow \$17.95
- Carbon Black \$14.95
- Burnt Umber \$14.95
- Cobalt Blue \$17.95
- Flesh 02 \$15.95
- Flesh 04 \$14.95
- Flesh 06 \$13.95
- Flesh 08 \$12.95
- Permanent Green 04 \$17.95
- Permanent Green 06 \$17.95
- Yellow White \$12.45
- Phthalo Green 02 \$17.95
- Phthalo Green 04 \$14.95
- Phthalo Green 06 \$12.95
- Phthalo Green 08 \$12.95
- Gray 02 \$16.95
- Gray 04 \$16.95
- Gray 06 \$16.95
- Gray 08 \$16.95
- Sap Green \$17.95
- Genesis Red \$16.95
- Pyrrole Orange 04 \$17.95
- Pyrrole Orange 06 \$14.95
- Quinacridone Crimson 01 \$19.95
- Quinacridone Magenta 02 \$16.95
- Quinacridone Magenta 04 \$13.95
- Quinacridone Magenta 06 \$12.95
- Quinacridone Magenta 08 \$12.95
- Raw Sienna \$14.95
- Paynes Gray \$17.95

Kingslan & Gibilisco Order Form



4670 Hickory Street
Omaha Ne
68106
(402) 397-0298
painting@kingslan.com

Please Read: Books, packets, videos are not returnable but will be replaced only if defective. Please allow 2-3 weeks for delivery. All items in our catalog are available at dealer discounts rates for qualifying buyers. Terms available upon request. The prices herein supercede all previously published offerings of our products. All charges will be made at the prevailing rate. 10/13

Name: _____
Address: _____
City: _____ State: _____ Zip: _____
Daytime Phone: _____ Fax Phone: _____
E-mail Address: _____

**Dealer/Home Studio Wholesale
Inquiries Welcome. We carry
the full line of Genesis, Royal
Brushes, Kingslan & Gibilisco
Publications and more!**

Item No.	Description	Quantity	Unit Prices	Total

Sub Total

Nebraska Residents Only Add 5% Sales Tax

Shipping (see shipping information below)

Grand Total

Method of Payment (Sorry - no C.O.D. and U.S. funds only)

- Check or money order
- MasterCard, Visa, American Express or Discover

Signature _____

Expires

USA Shipping Information:

10% of total up to the next \$5 increment, with a maximum charge of \$12.00 and a minimum charge of \$4.00.

Canada Shipping Information:

15% of total up to the next \$5 increment, with a 7.5% charge on shipping over \$15.00 and a minimum charge of \$4.00.

Outside USA Shpping:

20% of total up to the next \$5 increment with a minimum charge of \$5.